

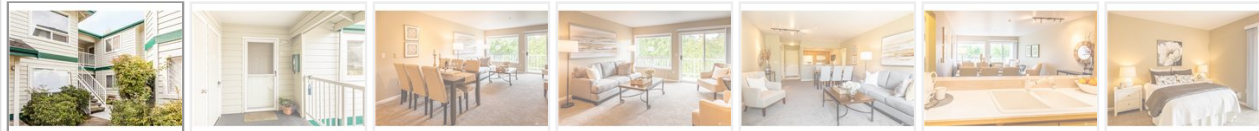
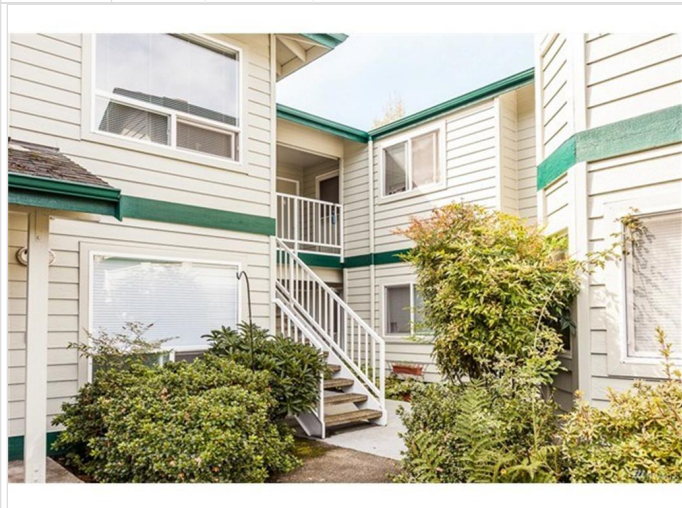
(http://www.themlsonline.c

TheMLSonline.com[®]

Seattle Area Home Search

Shoreline Listing

Photos Map Notes



Listing provided by NWMLS, courtesy of Coldwell Banker Bain

\$250,000

\$1,264 /mo.

MLS# 1025824

Pending

1403 NW Richmond Beach Rd Unit 6
Shoreline, WA 98177

Condo/Townhome / 1-Level Condo

2 beds / 2 baths
Built 1993

Listing Calc Walkscore 49

Description: This Condo is in a sought out neighborhood, Richmond Beach, and is close to everything but very private. It is a top floor light-filled corner unit, 2BDs, 2 full BTHS, 2 parking spaces, 2 decks, pantry & storage area. The kitchen is open to living area with a deck that overlooks a tranquil greenbelt. It is newly painted, with new carpet & new blinds. A well maintained project surrounded by beautiful gardens. Richmond Beach Park is close by. This condo has an AHS Home Warranty. Move-in ready.

Interior

Approx. Sq Ft: 900 ft²

Energy Source: Electric

Floor Covering: Vinyl, Wall to Wall Carpet

Fireplaces Total: 0

Unit Features: Balcony/Deck/Patio, End Unit, Insulated Windows, Top Floor

Water Heater Location: storage area-Electric

Heating and Cooling: Baseboard

Appliances that Stay: Dishwasher, Dryer, Garbage Disposal, Microwave, Range/Oven, Refrigerator, Washer

Window Covering: mini blinds & blinds

Common Features: High Speed Int Avail, Outside Entry

Location

City: Shoreline

Zip Code: 98177

County: King

Latitude: 47.76847076

State: WA

Area: 715

School District: Shoreline

Longitude: -122.37496948

Building

Unit: 6

Roof: Composition

Parking Type: Carport

Storage Number: 6

Number of Units in Building: 8

Year Built: 1993

Exterior: Wood Products

Number of Assigned Spaces: 2

Parking Space Number: 2 & 11

School

School District: Shoreline

Lot

View: No

Lot Details: Curbs, Paved Street, Sidewalk

Site

Community Name: Richmond Beach

Cats and Dogs: Cats Only

Bus Line Nearby: Yes

Senior Exemption: No

Rent

Monthly Rent if Rented: None

Terms: Cash Out, Conventional

Finance & Taxes

Homeowner Dues (monthly): \$419

Tax Year: 2016

Tax Expense: \$2,252

Unit

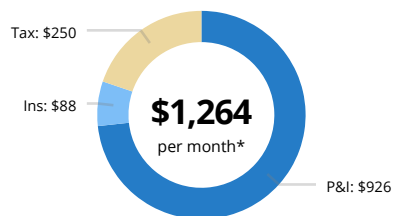
Unit Floor Number: 2

Other

Project: Emerald Creek

Listing provided by NWMLS, courtesy of Coldwell Banker Bain

For showings or questions, call:



Mortgage Rate Trends

Based on national averages. Updated 17 hours ago

Loan	Rate*	Change	APR
30 yr fixed	3.750%	0%	3.779%
30 yr FHA	3.625%	-0.125%	4.647%
15 yr fixed	3.250%	-0.125%	3.535%

*Rates are only estimates and not guaranteed.

Price History

Sep 9, 2016 \$250,000

Community Info

Shoreline, WA

Avg Listing Price	\$538,169
Avg Price/SqFt	\$283
Active Listings	110
Recently Sold	791

WalkScore® 49

Car-Dependent

Most errands require a car.

[View details](#)

© 2001-2016 TheMLSonline.com | All rights reserved | Equal Housing Opportunity

TheMLSonline.com is a member of NWMLS, but is not a multiple listing service. Members of NAR® (<http://www.realtor.org/>), Washington Realtors® (<http://www.warealtor.org/>), SKCAR® (<http://www.nwrealtor.com/>), and Northwest MLS® (<http://www.nwmls.com/>)

We feature most properties listed by John L Scott® (<http://www.themlsonline.com/seattle-real-estate/search/broker/name/John+L+Scott>), Windermere®, Coldwell Banker Bain®, Century 21®, RE/MAX®, Redfin®, Zip Realty®, and thousands more.



The database information herein is provided from and copyrighted by the Northwest Multiple Listing Service (NWMLS). NWMLS data may not be reproduced or redistributed and is only for people viewing this site. All information provided is deemed reliable but is not guaranteed and should be independently verified. All properties are subject to prior sale or withdrawal. All rights are reserved by copyright. Listings plotted on maps are only estimates.